



**Current members of  
GMHSC:**

- AIDS Moncton Inc.
- Atlantic People's Housing Ltd.
- CMHC
- Community Chaplaincy for Ex-Offenders
- John Howard Society of Greater Moncton Inc.
- Maison Nazareth House
- Mobile One Community Services Inc.
- Moncton Youth Residences Inc.
- New Life Mission Inc.
- The Salvation Army
- YMCA
- YWCA

**MANDATE**

The Greater Moncton Homelessness Steering Committee is an inter-agency committee representing agencies in Greater Moncton that work with the homeless population and those at risk of becoming homeless.

Established in 2000, the GMHSC provides leadership and coordinates communication among stakeholders and service providers to ensure the implementation of the Greater Moncton Community Plan on Homelessness.

It also works to create public awareness about issues surrounding homelessness, poverty and housing.

[www.monctonhomelessness.org](http://www.monctonhomelessness.org)

**Homelessness and mental health project launched**

Greater Moncton will be one of five cities in Canada involved in a five-year research demonstration project on homelessness and mental illness. Earlier this year, the federal government allocated \$110 million to the Mental Health Commission of Canada to find ways to help the growing number of homeless people who have a mental illness. Research will also be carried out in Vancouver, Winnipeg, Toronto and Montreal. Former Moncton-Dieppe-Riverview MP Claudette Bradshaw has been hired as Director for the Moncton component of the project.



From right, Claudette Bradshaw, Dr. Paula Goering and Sam Tsemberis meet with agencies.

Paula Goering, head of the research team for the Commission, and Sam Tsemberis, founder of the Pathways to Housing project in New York, were in the city in early September for the launch. The project will be modelled on Pathways to Housing ([www.pathwaystohousing.org/](http://www.pathwaystohousing.org/)) as well as the Toronto-based Streets to Homes ([www.toronto.ca/housing/about-streets-homes.htm](http://www.toronto.ca/housing/about-streets-homes.htm)), a program endorsed by Toronto City Council in partnership with contracted community-based service providers. Both are based on a "housing first" approach, rather than expecting people to deal with their mental health and/or addictions issues before being able to access housing. In Greater Moncton, the project team of researchers will work closely with agencies that work with the chronically homeless in order to identify potential participants for the project.

**Supportive housing makes for great neighbourhoods**

That's the conclusion of this important new study of two Toronto supportive housing buildings for people with mental illness, many of whom were previously homeless, and the communities that surround them. As the City of Toronto, along with the Ontario and Canadian governments, work to develop affordable housing strategies, this research shows the important role that supportive housing has to play. Read the full report. *We Are Neighbours: The Impact of Supportive Housing on Community, Social, Economic and Attitude Changes.*

[www.wellesleyinstitute.com/](http://www.wellesleyinstitute.com/)

**Friday, November 21, 7:30 - 9am**

**The Greater Moncton Homelessness Steering Committee will host a  
Community breakfast – Focus on homelessness  
to mark National Housing Day on November 22<sup>nd</sup>. The event will be held  
at Marché Moncton Market Festival Hall. Stay tuned for details.**

## **Better Off in a Shelter?**

### ***A Year of Homelessness & Housing among Status Immigrant, Non-Status Migrant, & Canadian-Born Families***

A new research report from the University of Toronto's Centre for Urban and Community Studies / Cities Centre by Emily Paradis, Sylvia Novac, Monica Sarty, and J. David Hulchanski offers these troubling findings: Women in Toronto without permanent resident status - whether they are temporary workers awaiting resolution of a refugee claim, or living "underground" - are extremely vulnerable, often living in conditions of deep poverty, housing instability, danger, and exploitation. They have limited access to social assistance, health care, and other social benefits, and often rely on under-the-table employment or informal networks to secure housing. For these women, pregnancy and childbirth represent a crisis, making employment impossible, incurring health care costs, and disrupting precarious housing arrangements. Most enter family shelters where they are required to try to regularize their status, although many will not qualify as refugees. Read more. [www.wellesleyinstitute.com/](http://www.wellesleyinstitute.com/)

## **Important Dates – Mark your calendar**

**October 17<sup>th</sup>** – The International Day for the Eradication of Poverty has been observed every year since 1993, when the United Nations General Assembly, by resolution 47/196, designated this day to promote awareness of the need to eradicate poverty and destitution in all countries, particularly in developing countries - a need that has become a development priority. Learn more [www.un.org/depts/dhl/poverty/](http://www.un.org/depts/dhl/poverty/)

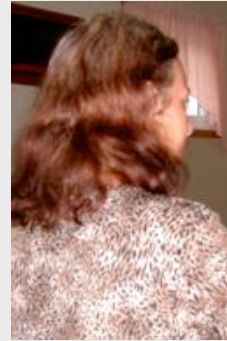
**October 17-18, 2008.** 2<sup>nd</sup> Summit on Poverty: Justice before charity. Central United Church, 150 Queen Street in Moncton. Organized by the NB Common Front for Social Justice Inc. For information 506-851-7084

## **We get e-mails!**

I was at a fast food restaurant in Moncton with my kids, and this homeless guy was outside looking for food in the garbage. This very nice guy who was there with his family invited him inside, and bought him a meal and a coffee. The homeless guy waited patiently for his food under the eyes of the disgusted teenagers working at the front counter. Visibly ashamed about his appearance and dirty hands, he took his tray to the kids' area at very end of the store, and sat there to eat. After a few minutes, the Manager approached him and asked him to leave the kids' area and go sit somewhere else. On her way back to the counter, I asked her why she asked him to leave, and she said that anyone who is not with a child is not supposed to be in that area. I asked her if I was by myself, would I be able to sit there? She said, no, you have to be with a child. Well, I got up and took a peek inside the area, and there was one lonely, well-dressed guy...and she never asked him to leave. I thought it was a sad story...my daughter and I were clearly upset about it, and she suggested I should write to the newspaper.  
Karen Pearce, AIDS Moncton

## **People touched by homelessness**

### ***Affordable, suitable housing hard to find on CPP disability***



Louise (not her real name) was in second year at Université de Moncton when she was diagnosed with schizophrenia. Now 49, she lives on \$500 per month Canada Pension Plan disability.

Until recently, she lived in a small town in Nova Scotia where she shared an apartment with a friend. She moved back to Moncton because she missed her grown son, and wanted to be closer to him.

The first two months, she stayed in a rooming house that cost her \$350 per month, which was too expensive for her income. She found another rooming house on Princess Street that was slightly less (\$325), paid a deposit, and then the month's rent in full when she moved in on August 31st. Three days later, the woman who owns the rooming house kicked her out "for no reason", and she ended up at the House of Nazareth. Staff told her that she was not the first woman to land on their doorstep after being kicked out of that rooming house for no reason. She went back the next day for a change of clothing, and was refused.

Since she had paid for a month's rent, she had little money left for September – certainly not enough for rent – and was hoping to stay at House of Nazareth until her cheque arrived on October 1<sup>st</sup>. At that point, she planned to find another rooming house, hopefully one that fits her budget.

The Homelessness Partnering Strategy defines "at risk of homelessness" as someone who is at imminent risk of eviction from their current housing, who pays too high a proportion (more than 30%) of their income for housing or who lives in unacceptable housing circumstances. On all three counts, Louise certainly falls into the category.

**WE WELCOME YOUR COMMENTS, IDEAS AND FEEDBACK.**

**SEND TO COMMUNITY DEVELOPMENT OFFICER**

**SUE CALHOUN [info@monctonhomelessness.org](mailto:info@monctonhomelessness.org)**

*If you have questions about the Homelessness Partnership Strategy, contact Mireille Roy at Service Canada 506-851-3554 or [mireille.roy@servicecanada.gc.ca](mailto:mireille.roy@servicecanada.gc.ca)*